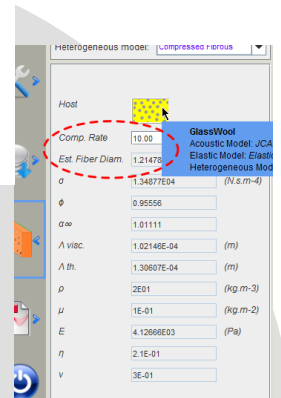
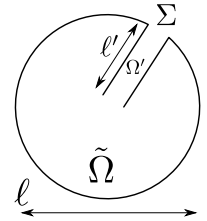
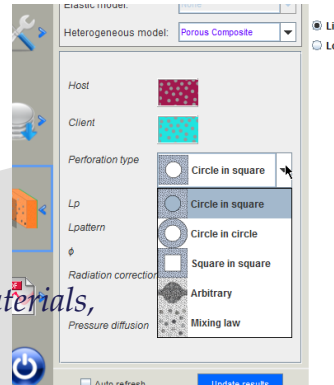




- What's new in TMM/FTMM ?
- AlphaCell !
- Okay. And what's new in AlphaCell ?
- Well check this out ...

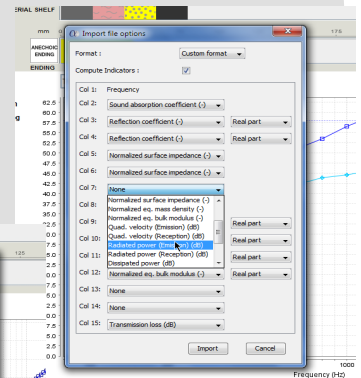
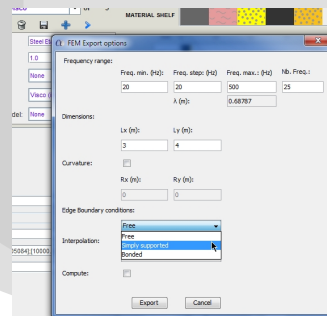
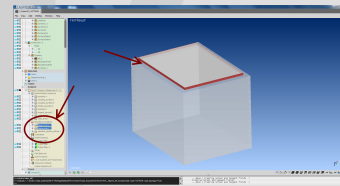
Some new predicting models

- ↳ **orthotropic solid model**
ply composites, orientated structures ...
- ↳ **RKU equivalent plate mode**
constrained layer systems
- ↳ **porous composites**
materials with solid/porous inclusions, multiscale materials, acoustic & elastic parameters
- ↳ **inner resonators**
Helmholtz resonators
- ↳ **compressed fibrous**
indicate the compression rate, acoustic & elastic parameters



Some new general features

- ↳ **extended material database**
fibrous, foams, composites, studs
- ↳ **export of complete Actran FE model**
select BC, lateral dimensions, curvature ... and launch !
- ↳ **composite sound absorption or transmission**
arbitrary frequencies and number of components
- ↳ **import of arbitrary data**
measured, computed ... select what is what



And still ...

- state-of-the-art models for **porous**
- **visco-elastic** parameters
- **perforated** plates : circular, square, slits
- **screens & fabrics**
- **studs** & mechanical connections
- **heterogeneous** materials
- plane wave, **diffuse** field, **modal** field
- point force, **tapping** machine, **rainfall**
- **turbulent** boundary layer
- fully **batch-able**
- MS-Windows, Linux, Unix, MacOS

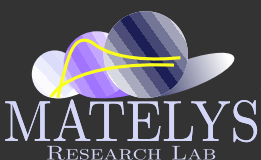
More materials to be modeled

Increased accuracy

Increased efficiency

Reactive and skilled support

Prepare to be MATELYS approved !



AlphaCell is a software product designed and developed by MATELYS-Research Lab

<http://alphacell.matelys.com/>
alphacell@matelys.com

MATELYS - Research Lab
1 rue Baumer
F-69120 Vaulx-en-Velin
FRANCE

Phone: +33 981 32 18 72
Fax: +33 981 38 13 80
Email: contact@matelys.com
Web: <http://www.matelys.com/>